



MONTHLY MEMBERSHIP PROGRESS REPORT

District 19 C

Results as of: 05/31/2019

GMT: HOWARD HUDSON

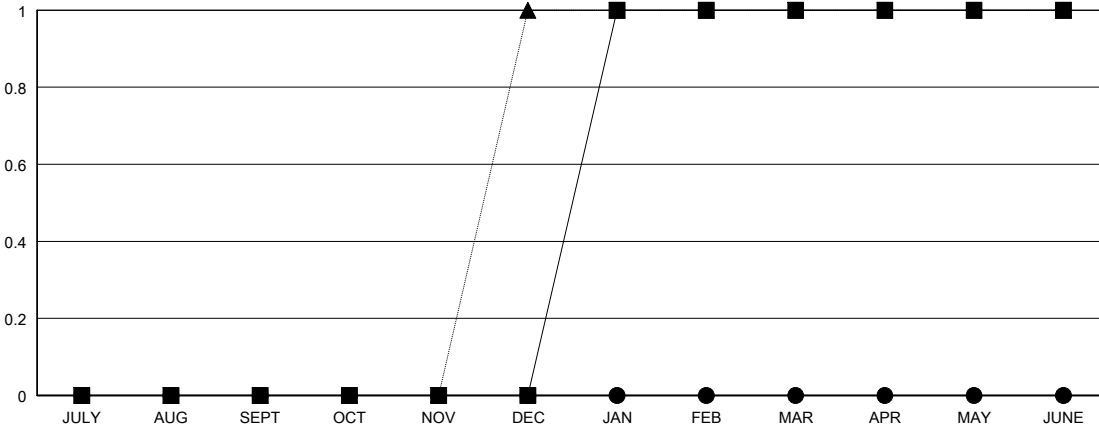
LOCATION WASHINGTON

GMT CA

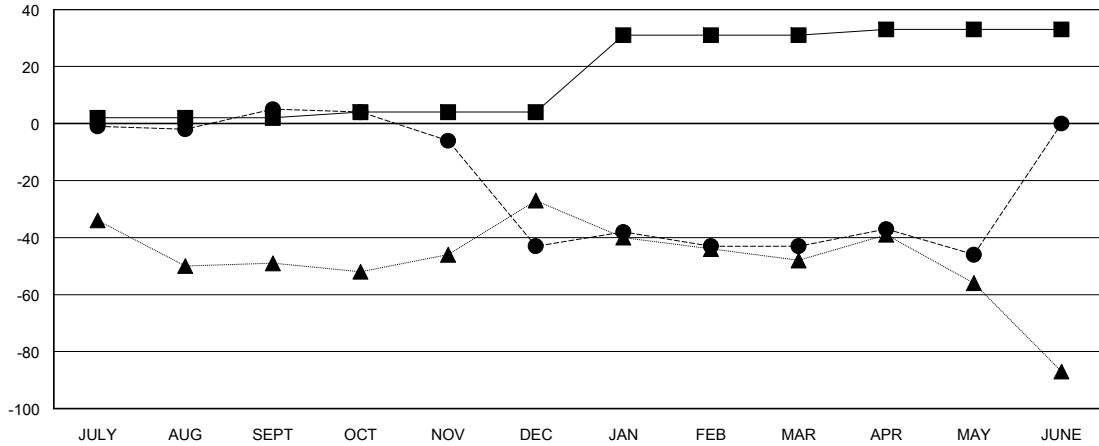
Clubs			
RESULTS FOR 2018-2019			
QUARTER	NEW CLUB GOAL	NEW CLUBS	DROPPED CLUBS
JULY/AUG/SEPT	0	0	1
OCT/NOV/DEC	0	0	0
JAN/FEB/MAR	1	0	0
APR/MAY/JUNE	0	0	0

Members			
RESULTS FOR 2018-2019			
QUARTER	MEMBER GROWTH NET GOAL	MEMBER GROWTH ACTUAL	DROPPED MEMBERS ACTUAL (including transfers)
JULY/AUG/SEPT	2	39	31
OCT/NOV/DEC	2	21	63
JAN/FEB/MAR	27	44	34
APR/MAY/JUNE	2	22	23

GOALS AND ACTUAL NEW CLUBS CUMULATIVE



GOALS AND ACTUAL MEMBERS CUMULATIVE



DROPPED CLUBS: 1	30 CLUBS OF 46 ADDED 1 OR MORE NEW MEMBERS	<u>GENDER DISTRIBUTION</u> MALE 762 (53.44%) FEMALE 664 (46.56%) Women Percentage Fiscal Year Goal: 46%
DROPPED MEMBERS	CLICK HERE FOR CUMULATIVE MEMBERSHIP DATA	TOTAL FAMILY UNIT MEMBERS 394
DECEASED 21		FAMILY MEMBERS PAYING HALF DUES 205
CLUB CANCELLED 0		
OTHER 130		
TOTAL 151		